



**Luna Glow USA Inc.**

**Introducing**

**LUMENITE<sup>®</sup>**  
**LIGHT SLEEVE**

**\*EVACUATION LIGHTING YOU CAN COUNT ON\***

# Lighting for Seeing



## Becoming – Pathfinder Light to be Seen

- 100% Fail Safe, Reliable Evacuation Illumination
- The Lumenite® Light Sleeve provides extended duration visual guidance after covering the critical initial power outage stage with adequate evacuation lighting.
- Lighting for seeing that turns into visual egress directional routes.



## Pathfinder Light

Pathway marking is also capable of replacing overhead emergency lighting. It does not matter how bright emergency lighting was designed to be if it is not operating or cannot penetrate the smoke.

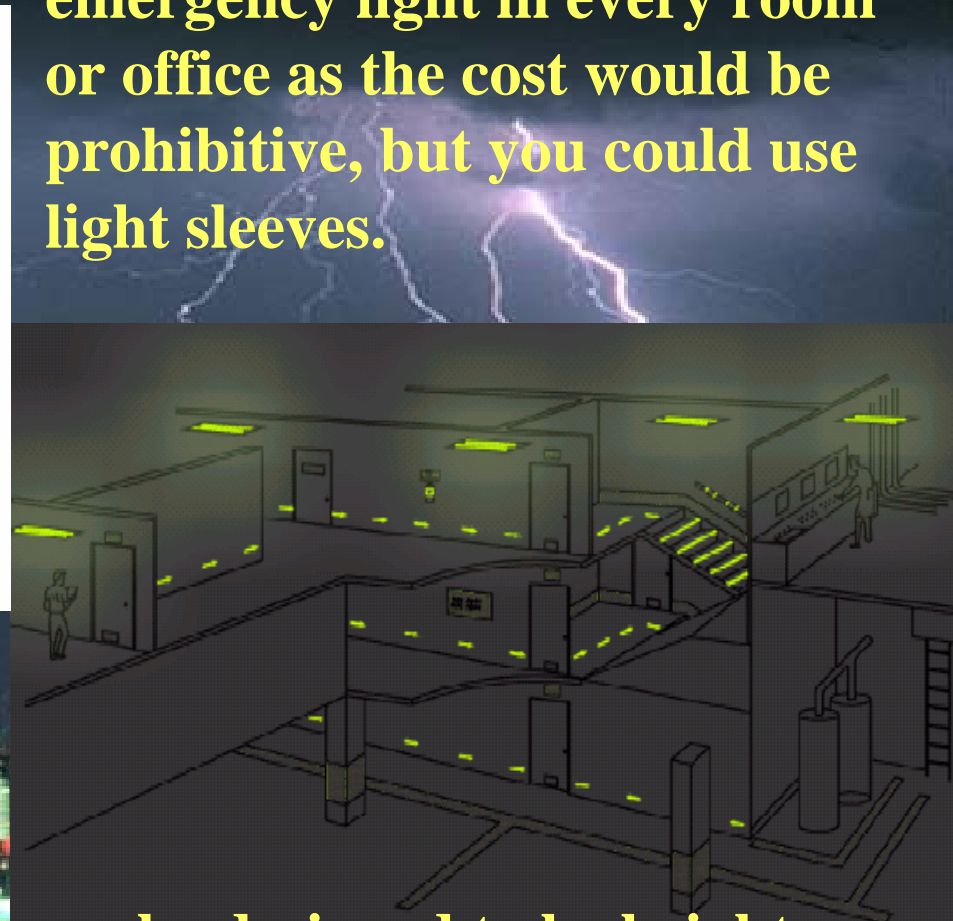
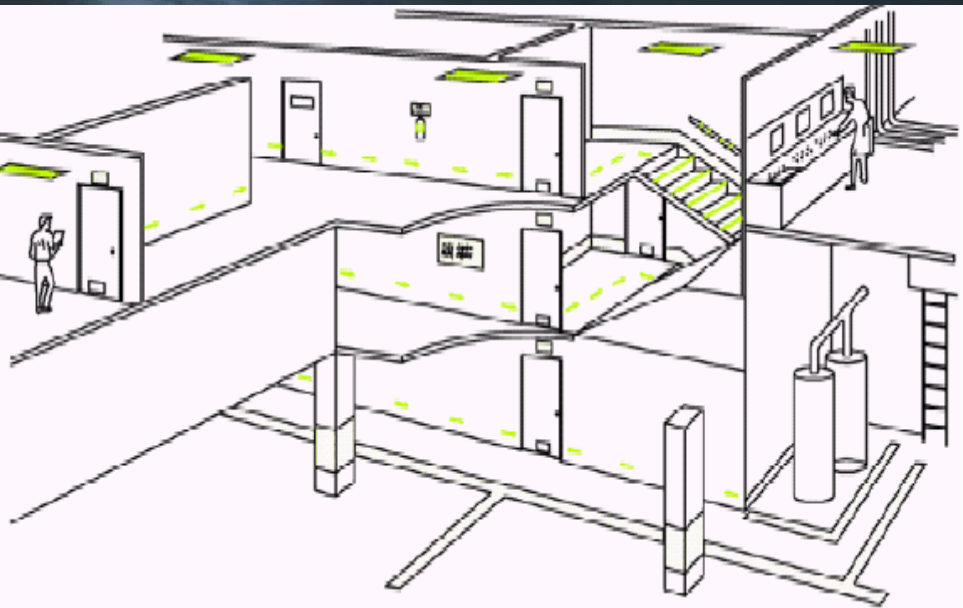
The National Research Council of Canada has stated that photoluminescent pathway marking “appears to be a cost effective addition or even a potential replacement for traditional electrical emergency lighting, since it does not consume energy, requires no wiring, needs minimum maintenance and is totally reliable, provided it is installed in locations where permanent full lighting is provided.”





# Makes possible for the safe, orderly and speedy evacuation of buildings in blackout conditions

You would not put an emergency light in every room or office as the cost would be prohibitive, but you could use light sleeves.



While electrically powered systems can be designed to be brighter than photoluminescent materials, they can never be as reliable



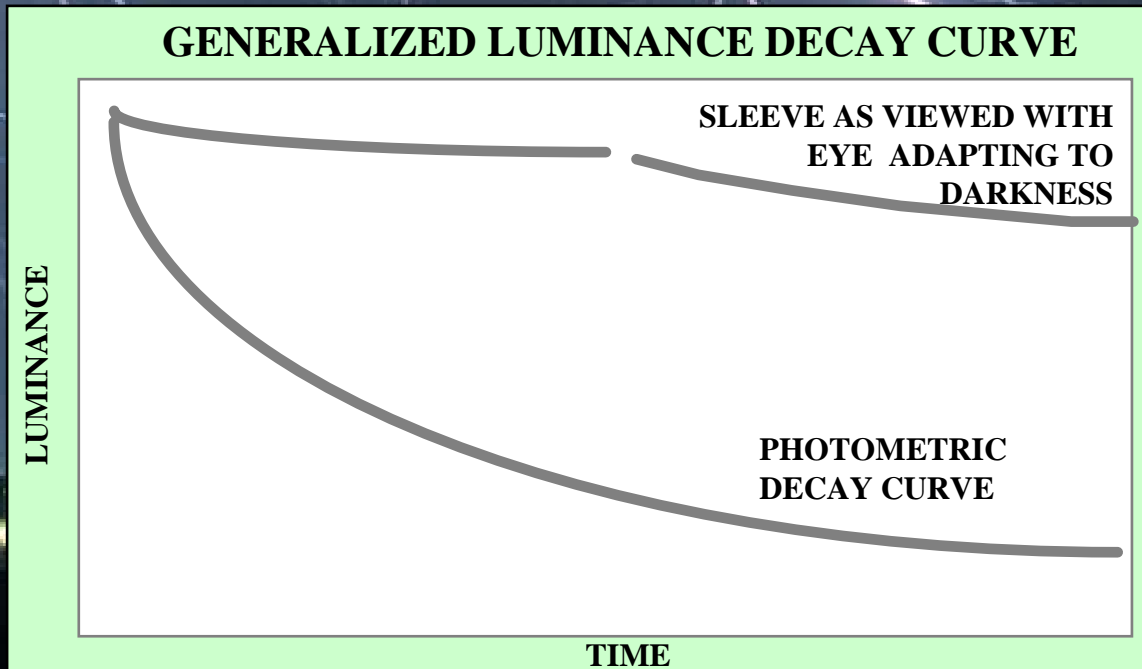
# AFTER POWER LOSS –

81,000 mcd/m<sup>2</sup> provided or over 200,000 times above Human Eye Visibility threshold.

Designed for INITIAL CRITICAL MOVEMENT TIME;  
1<sup>ST</sup> 15 minutes, and provides 90 mcd/m<sup>2</sup> or 250 times above Human Eye Visibility threshold.

As those in the know will tell you.....  
“if you're not evacuated within 15 minutes then you better be part of the rescue team”.

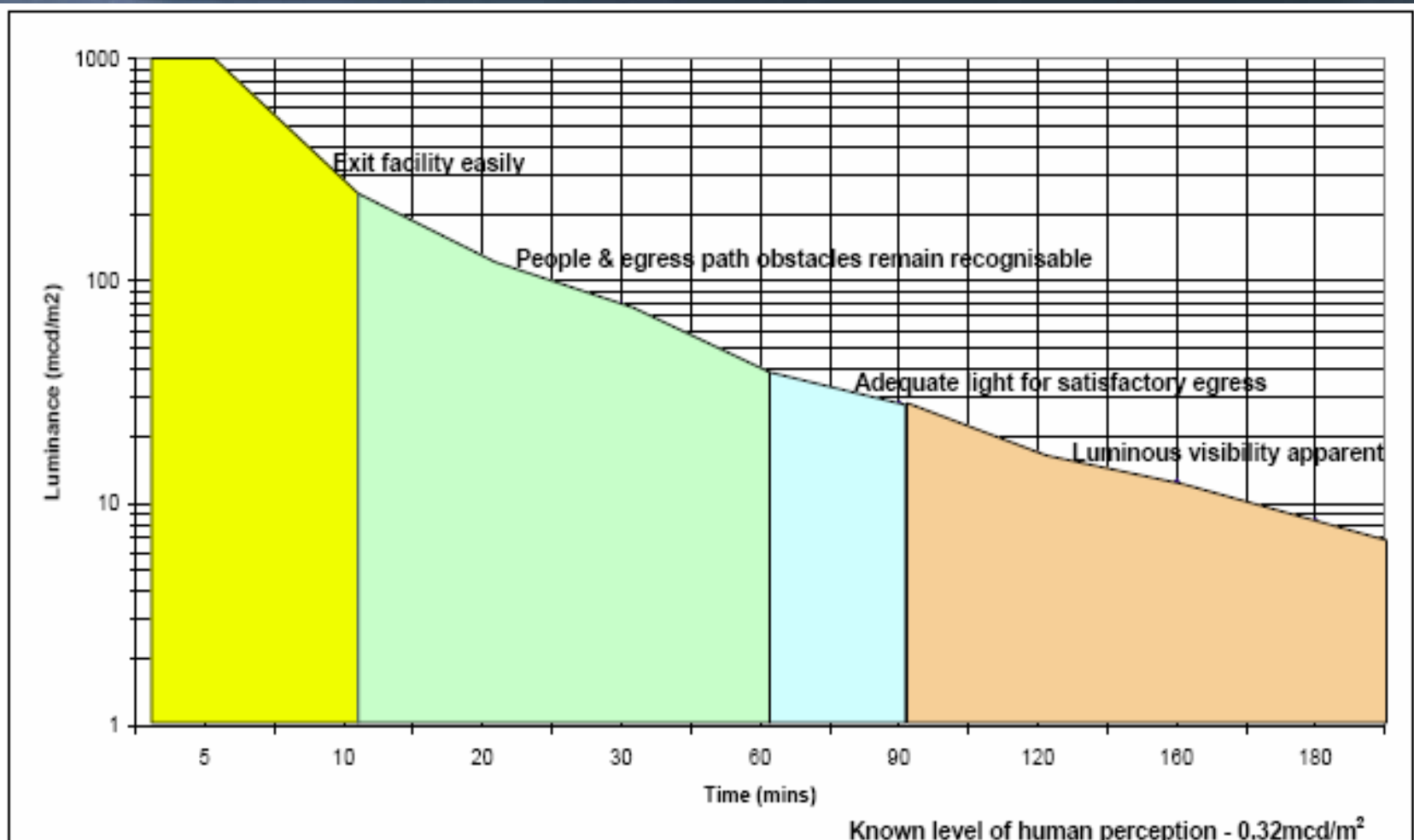
At 90 minutes delivered light is 50 times greater than Human Eye Visibility threshold.





# Understanding

- We are talking about sufficient light to be able to safety evacuate a building
- Initial level at power off - 81,000 mcd/m<sup>2</sup>





# Sleeve Issues

- Lamp color shifting or Lux levels losses are negligible
- A 48" full Lumenite® Sleeve blocks < 30% of lamp Lumens
- A 24" centered Lumenite® Sleeve blocks < 17% of lamp Lumens
- Sleeve augment battery operated systems by the 100% 'Always ON' status in case of any failure
- Compensates for reduced lighting as voltage reduces during emergency battery discharge
- A Lumenite® sleeve acts like a light battery and is 100% failsafe
- Supports the reliance of hard wired systems bridging the gap to make the entire system 100% reliable
- Helps cover the short window of time from a fire starting to a successful exit



# Sleeve Issues

- **Quickly and Cheaply solves emergency lighting needs in deficient areas**
- **Shortcoming in Fire Protection Areas easily overcome by adding sleeves to provide visual guidance**
- **Promotes rapid evacuation movement by providing a 100% reliable unambiguous escape route path**
- **Well suited for applications where the sudden loss of light is a threat to safety and security**
- **Ideally a part of any sound evacuation system providing enhancement for powered signs**
- **Requires no alterations to existing fixtures**
- **Lumenite<sup>®</sup> sleeves do not add toxic fumes when burned**
- **Classified as explosion proof for all divisions and groups**
- **Used in elevators, hallways, tunnels, \$ counting rooms, hospitals, aged care, schools, city command, military, ships, trains, subway stations, prisons, child care, mining, airports and production facilities**



# Sleeve Issues

- Indoor use is a 10 year 100% component replacement warranty
- Lumenite won the 2005 Product of the Year: Compliance Magazine, Security and Safety Magazine and Buildings Magazine
- Add dollar value on lamp fixture sales by upgrading package to emergency unit
- Adequately provides large open plan offices with egress direction by using 24" sleeves with retainer rings on 48" lamps
- Recycle and reuse sleeve for changed location configuration
- Wherever evacuation lighting is desirable but cost is prohibitive then the light sleeve will meet the need
- Meet security requirements with the sleeve's Always ON feature
- Current stocks of T8 and T12 sleeves ready for short cycle delivery
- Continues to gain market share because it offers durability and cost advantage
- Project package protection by specifying Lumenite® sleeves